

CERTIFICATE OF LOCATION OF GOVERNMENT CORNER

S. 1/4 Corner of Section 20, Township 105, Range 42, 5TH P.M.

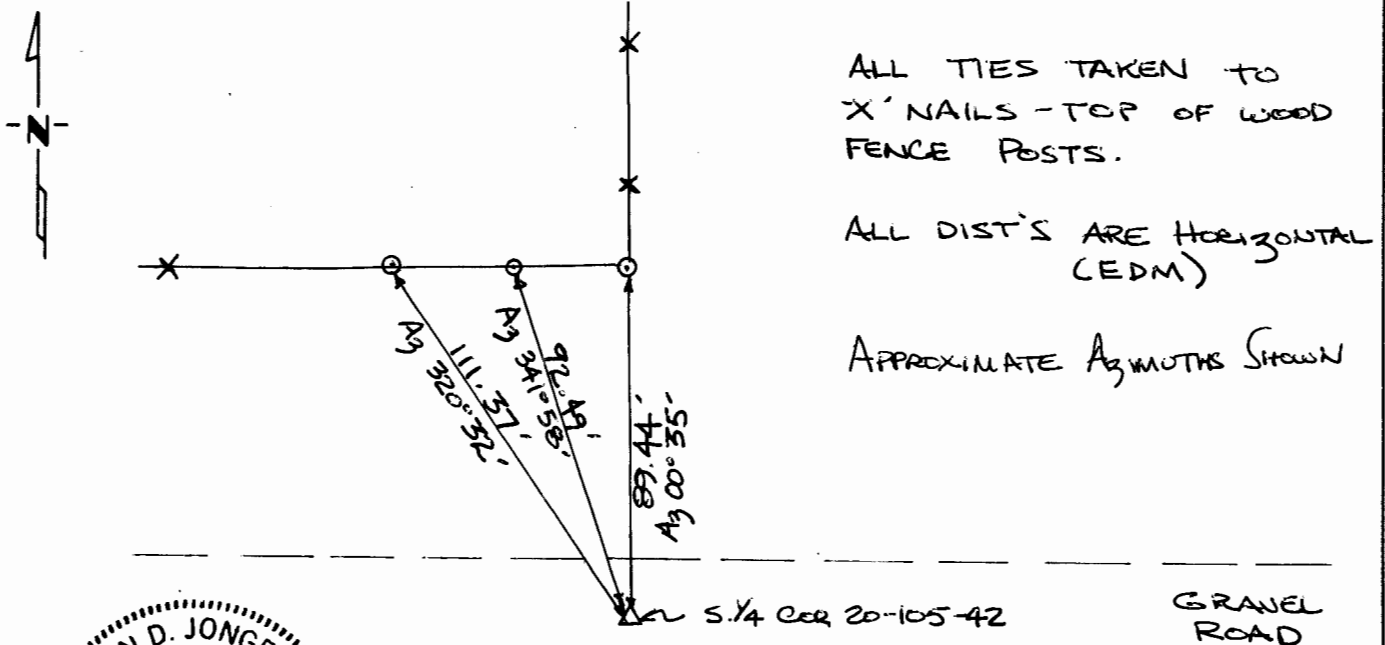
STATE OF MINNESOTA, County of MURRAY

At the corner location shown on the sketch:

On 11-2-92 found a 3/4" REBAR 1" BELOW GRAVEL SURFACE
- LOWERED TO 6" BELOW SURFACE
 left monument as found, lowered monument, removed monument (explain)

On _____ placed a _____
DATE

SKETCH OF REFERENCE TIES



Statement of evidence relative to this corner location is on back of page.

I hereby certify that this document and the data contained herein was prepared by me or under my direct supervision.

Kevin D. Jongerius 12-8-92
 SIGNATURE DATE
 Kevin D. Jongerius
 Registration No. 17518
 Land Surveyor, Professional Engineer
 County Surveyor, County Engineer

OFFICE OF THE COUNTY RECORDER

County of MURRAY
 I hereby certify that this document was filed in the Co. Recorders office at _____ .M. on the _____ day of JAN 14 1993 A.D., 19____
 County Recorder James V. Johnson
 By _____, Deputy
 DOCUMENT NO. _____